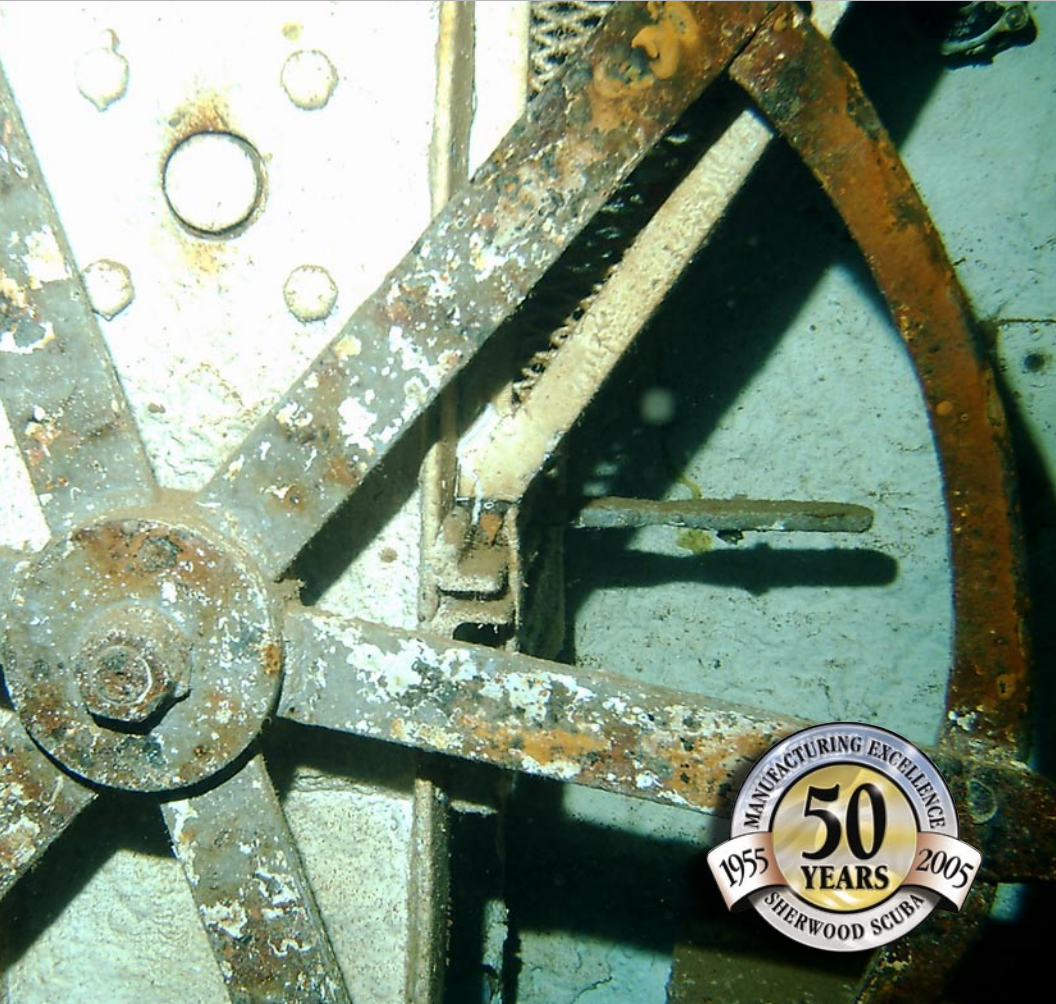




SHERWOOD SCUBA®

Celebrating 50 Years

www.SherwoodScuba.com · www.AKONA.com · www.GenesisScuba.com





By the mid-1950s Sherwood had earned a reputation for robust engineering.



compressed gas and air management equipment for use in medical and industrial devices. By the mid-1950s Sherwood had earned a reputation for robust engineering and precise manufacturing, two qualities essential to making reliable life support equipment.

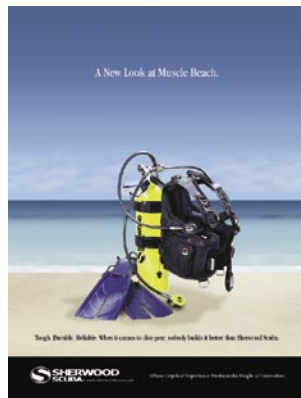
So, Sherwood was a natural choice to produce components for these early personal air regulators designed and built for use underwater. Through the 1950s and 1960s Sherwood parts went into almost every regulator on the market. Manufacturers staked their reputations – and divers staked their lives – on the dependability of Sherwood components. And, as scuba diving grew in popularity, Sherwood grew.

In 1972 Sherwood introduced the SRB-2000: the first complete regulator to be sold under its own brand name. The behind-the-scenes engineering and manufacturing powerhouse had entered the

spotlight, and it never left.

Today, the Sherwood brand has expanded into a full line of dive equipment and products, each continuing the long tradition of utter simplicity and absolute reliability.

For 50 years now divers around the world have counted on Sherwood equipment for dependable performance in all conditions, and this trust is something we'll keep earning, dive after dive, for the next 50 years and beyond.



For 50 years now divers around the world have counted on Sherwood equipment.



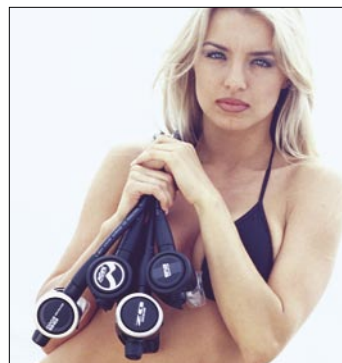
Sherwood brings it all together, so you can take it anywhere you want.

The Sherwood Group manufactures two of the world's most-popular scuba brands: legendary Sherwood Scuba and innovative Genesis Scuba, both offering exceptional reliability and value. The more you know about scuba, the more you'll know about Sherwood and Genesis.

Then there's AKONA, the world's first travel bag company founded on the knowledge that two-thirds of the Earth is water. AKONA bags manage both wet and dry gear with ease, meeting the needs of explorers of all inclinations and destinations.

A Heritage of Engineering Excellence.

Whether you're looking at a product from **Sherwood**, **Genesis**, or **AKONA**, you'll be looking at something that's elegantly designed and ruggedly built. That's because **Sherwood** has the in-house expertise and resources to design and build right down to the component level. So, the products we put our brand names on don't just meet the standards of a marketing department. They must stand up to hard use in the field, and intense scrutiny by some of the world's top industrial design engineers.



Sherwood Scuba, Genesis Scuba, and AKONA Adventure Gear. Three top makers of scuba and travel gear, from one source: **The Sherwood Group**.

1923

Sherwood Valve starts as a precision machine shop.

1942 - 43

French naval officer Jacques-Yves Cousteau teams with natural gas engineer Emile Gagnon to modify an automotive gas regulator for use as an on-demand breathing regulator.

1952

Publication of *Silent World* by Jacques Cousteau.

1955

Sherwood is approached to design and manufacture post valves.

1956

Wetsuit introduced.

1958 - 61

The television series *Sea Hunt* popularizes scuba diving and attracts a generation of divers to the sport.

1959

Sherwood engineers and manufactures a complete first-stage regulator, a vital component in many medical devices and scuba products marketed by other companies.

1960

NAUI (National Association of Underwater Instructors) formed.

1963

Sherwood acquires Selwyn Pacific (a maker of LP gas equipment), and the company changes its name to Sherwood Selpac.

1966

PADI (Professional Association of Diving Instructors) formed.

1968 - 76

The Undersea World of Jacques Cousteau captivates the nation and introduces a second generation of divers to scuba.



Sherwood Scuba may not make waves.

But what we do make, is the gear a lot of serious divers depend on, just as they have for 50 years.



Sherwood is one of the few brands with the in-house resources to design and manufacture dive products from scratch. As a result, we offer the most uncompromising gear out there, at any price. All designed around one core philosophy: simple reliability.



After all, the last thing you want to be thinking of when you're 200 feet down, is a valve – or any other part of your gear.



Simply reliable: it's the reason our regulators can be found in the world's most-challenging environments.

In caves. Under Polar ice. And getting hard use in rental shops. Any place where reliability is of the utmost importance, you'll find Sherwood Scuba gear.



Even our most-innovative products are built on a foundation of simple reliability.



For example, there's our new Tortuga BC. It combines the comfort and freedom of a back-mounted air cell with the surface stability of wrap-around buoyancy. It's the best of both worlds.



So, when you're looking for no-compromises gear you can rely on, in all conditions, on every dive, see what Sherwood has to offer.



1969

Sherwood Selpac becomes part of Hill Acme, a maker of large machine tools.

1972

The SRB-2000 regulator is introduced, the first product to be sold under the Sherwood Selpac brand name. Sherwood continues to supply precision-machined components to other manufacturers and distributors.

1976

Sherwood Selpac introduces the first commercially manufactured dual outlet manifold.

1980

Sherwood Selpac launches the Sherwood Magnum and Magnum Blizzard regulators, which rapidly become the industry standards for recreational and cold-water diving.

1984

Sherwood introduces the Brut regulator, which becomes the rental industry's #1 choice for its extreme simplicity, reliability, and ease of servicing.

1988

Sherwood introduces the Genesis cylinder in three sizes, the world's first high-pressure cylinders designed for scuba diving. With a working pressure of 3,500 p.s.i., the Genesis cylinders can hold 20% more air, for longer dives and less bulk.

1990

Sherwood introduces The Source, the first dive computer designed especially for ease of use. Its intuitive controls and diver-friendly display set the standard for today's most-popular computers.

1994

AKONA started, filling a need for high-quality, long-lasting bags, gloves, and boots.



Unmistakable Real-world Experience



Genesis Scuba is a company run by and for divers. So, everything we make shows the unmistakable guiding hand of real-world experience. Our innovative approaches are more than clever; they're ruggedly simple solutions that solve problems without creating new ones.



Take the design of our high-performance Dry Air Demand (D.A.D.) first stage. Its unique air-sealed design automatically equalizes pressure without the balancing issues of conventional sealed systems and without letting water inside. No water inside means no silt, sand, or salt inside. No silt, sand, or salt inside means no clogging, abrasion, or corrosion. That means more reliability in more diving conditions. And, less maintenance over the long haul.



Yes, the D.A.D. first stage is patented.

But, more important to us, our dive buddies, and you, it works great.

The D.A.D. first stage is built into most Genesis regulators, including our high-performance GS2000. Spec-for-spec, feature-for-feature, dive after dive, you won't find a more-rugged, more-capable regulator in its price class.

See, Genesis Scuba is all about improving your diving experience, whether it's by making top-quality gear affordable or by pushing the performance edge through superior innovation.

It's no wonder Genesis products have received 20 Tester's Choice awards and 10 Best Buy awards from Scuba Diving magazine. And, Genesis is consistently rated one of the best brands in the diving industry.

Bringing you innovation, performance, and value – that's our livelihood. But diving – that's our life.



From the vibrant clarity of the Great Barrier Reef to the shimmering sands of the Kalahari, AKONA makes the stuff you need to explore your world —

like a unique line of gear bags. Unlike most of the travel bags on the market, AKONA gear bags were designed for dive trips. So, they have all the advanced suspension systems and carrying capacity of their land-based cousins. But with innovative adaptations that make them perfectly suited for adventures that include water. That versatility makes them ideal travel companions, wherever you're going, whatever you're doing.



For instance, our new Evolution roller bag fits a complete dive outfit in 20% less space than conventionally designed scuba gear bags. It has a removable padded regulator bag, removable mesh bag, and drain holes for improved air circulation. And, our Wet/Dry Backpack is a comfortable daypack



designed to handle wet gear while keeping your dry gear dry.

When your explorations take you under water, AKONA wetsuits are your second skin, with flawless fit and all-day comfort. They're the embodiment of form and function over fashion.

Blue skies, clear water, an open road ahead. AKONA makes the versatile, indestructible, easy-going gear that gets you there.



Grab your gear. The world is waiting.

www.AKONA.com



1996

Genesis launched as its own line of scuba gear, including regulators, cylinders, and BCs.

1999

AKONA manufactures a premier line of wetsuits.

2000

Genesis introduces the GS2000 regulator with the innovative D.A.D. (Dry Air Demand system) first stage.

2002

QCR weight system introduced. This revolutionary system positions weights for maximum comfort and efficiency, while eliminating the weaknesses common to using hook-and-loop fasteners.

2003

Sherwood introduces the Wisdom, its first air-integrated computer.

2005

QCR 2 weight system introduced, making the QCR system not only the most comfortable, but also the quickest and easiest weight system to load and unload.





Celebrating 50 Years

www.SherwoodScuba.com · www.AKONA.com · www.GenesisScuba.com



SHERWOOD SCUBA, LLC.